

**INDIRA GANDHI MEDICAL COLLEGE & RESEARCH INSTITUTE  
KATHIRKAMAM, PUDUCHERRY**



**MEDICAL RECORDS DEPARTMENT**

**ANNUAL REPORT FOR THE YEAR**

**2015**

**INDIRA GANDHI MEDICAL COLLEGE AND RESEARCH INSTITUTE - PUDUCHERRY****MEDICAL RECORDS DEPARTMENT****HIGHLIGHTED FIGURES FOR THE YEAR - 2015**

<b>SI:NO</b>	<b>DETAIL</b>	<b>NO. OF PATIENTS</b>
1	TOTAL NUMBER OF OUT PATIENTS ATTENDANCE	5,48,552
2	TOTAL NUMBER OF NEW PATIENTS	3,05,723
3	TOTAL NUMBER OF OLD PATIENTS	2,42,829
4	DAILY AVERAGE OF OUT PATIENTS ATTENDANCE	1,847
5	TOTAL NUMBER OF OUT PATIENTS ATTENDANCE IN CASUALTY	1,13,403
6	DAILY AVERAGE OF OUT PATIENTS ATTENDANCE IN CASUALTY	311
7	TOTAL NUMBER OF ADMISSIONS	20,655
8	TOTAL NUMBER OF DISCHARGES	20,341
9	TOTAL NUMBER OF DELIVERIES CONDUCTED (NORMAL:1441 / CAESAREAN:544)	1,985
10	TOTAL NUMBER OF BIRTH ( MALE : 1012 / FEMALE: 973)	1,985
11	TOTAL NUMBER OF STILL BIRTH	13
12	TOTAL NUMBER OF MLC REGISTERED	2,794
13	OVERALL INVESTIGATIONS	7,69,056
14	NUMBER OF INVESTIGATIONS IN BIOCHEMISTRY	3,28,273
15	NUMBER OF INVESTIGATIONS IN MICROBIOLOGY	39,083
16	NUMBER OF INVESTIGATIONS IN PATHOLOGY	3,47,531
17	NUMBER OF INVESTIGATIONS IN RADIOLOGY (CT SCAN STARTED FROM JULY - 2015)	54,169
18	TOTAL NUMBER OF MAJOR OPERATIONS PERFORMED	2,955
19	TOTAL NUMBER OF MINOR OPERATIONS PERFORMED	835
20	TOTAL NUMBER OF MINOR PROCEDURES IN OPD	13,736
21	TOTAL NUMBER OF ENT THERAPY (AUDIOMETRY = 798 / SPEECH TRAINING = 552)	1,350
22	TOTAL NUMBER OF DEATH	107
23	DEATH RATE	0.5%
24	TOTAL NUMBER OF BROUGHT DEAD	132
25	TOTAL NUMBER OF AUTOPSIES	1,321
26	TOTAL NO.OF PATIENTS - URBAN HEALTH CENTER (LAWSPET)	25,548
27	TOTAL NO.OF PATIENTS - RURAL HEALTH CENTER (KARIKALAMPAKKAM)	1,87,054
28	TOTAL NO. OF A R T CASES ( INCLUDING PRE- A R T & FOLLOW- UP )	17,070

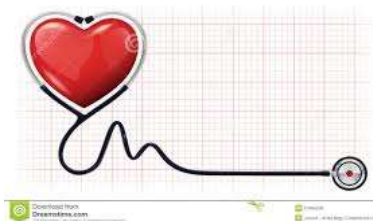
# EMERGENCY MEDICINE

<b>CASUALTY ATTENDENCE</b>	<b>1,13,403</b>
<b>CASUALTY ADMISSION</b>	<b>3065</b>
<b>CASES EXPIRED</b>	<b>107</b>
<b>POISONING</b>	<b>724</b>
<b>RTA</b>	<b>801</b>
<b>BURNS</b>	<b>21</b>
<b>ASSAULT</b>	<b>677</b>
<b>INJURY</b>	<b>196</b>
<b>HANGING</b>	<b>23</b>
<b>ELECTROCUTION</b>	<b>44</b>
<b>UNKNOWN BITE</b>	<b>113</b>
<b>SNAKE BITE</b>	<b>63</b>
<b>SCORPION STING</b>	<b>50</b>
<b>BROUGHT DEAD (OVERALL)</b>	<b>132</b>
<b>BROUGHT DEAD (MLC)</b>	<b>72</b>
<b>ABORTION</b>	<b>10</b>



# DEPARTMENT OF MEDICINE

<b>MONTH</b>	<b>OUT- PATIENTS NEW</b>	<b>OUT- PATIENTS OLD</b>	<b>IN- PATIENTS</b>
<b>JANUARY</b>	<b>5359</b>	<b>4819</b>	<b>318</b>
<b>FEBRUARY</b>	<b>5586</b>	<b>5741</b>	<b>314</b>
<b>MARCH</b>	<b>6384</b>	<b>5853</b>	<b>329</b>
<b>APRIL</b>	<b>5399</b>	<b>4961</b>	<b>263</b>
<b>MAY</b>	<b>5911</b>	<b>4464</b>	<b>283</b>
<b>JUNE</b>	<b>5925</b>	<b>4550</b>	<b>330</b>
<b>JULY</b>	<b>6412</b>	<b>4762</b>	<b>451</b>
<b>AUGUST</b>	<b>6352</b>	<b>5412</b>	<b>350</b>
<b>SEPTEMBER</b>	<b>7357</b>	<b>4545</b>	<b>382</b>
<b>OCTOBER</b>	<b>6545</b>	<b>6410</b>	<b>432</b>
<b>NOVEMBER</b>	<b>6880</b>	<b>5210</b>	<b>417</b>
<b>DECEMBER</b>	<b>6918</b>	<b>8912</b>	<b>423</b>
<b>TOTAL</b>	<b>75028</b>	<b>65639</b>	<b>4292</b>



**GRAND TOTAL**

**OUTPATIENTS: 140667**

**INPATIENTS: 4292**

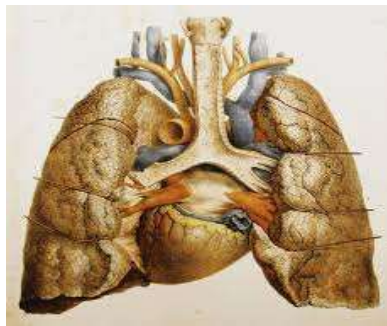
# DEPARTMENT OF RESPIRATORY MEDICINE

MONTH	OUT-PATIENTS NEW	OUT-PATIENTS OLD	IN-PATIENTS
JANUARY	1391	1013	31
FEBRUARY	1271	946	35
MARCH	1312	996	30
APRIL	1030	702	33
MAY	824	688	29
JUNE	1843	745	46
JULY	1152	452	57
AUGUST	1147	555	35
SEPTEMBER	1008	758	48
OCTOBER	1028	852	27
NOVEMBER	982	812	25
DECEMBER	1521	2216	33
TOTAL	14509	10735	429

**GRAND TOTAL:**

**OUTPATIENTS: 25244**

**INPATIENTS: 429**



# DEPARTMENT OF PAEDIATRICS

<b>MONTH</b>	<b>OUT-PATIENTS NEW</b>	<b>OUT-PATIENTS OLD</b>	<b>IN-PATIENTS</b>	<b>NICU</b>
<b>JANUARY</b>	<b>2060</b>	<b>1037</b>	<b>317</b>	<b>74</b>
<b>FEBRUARY</b>	<b>2879</b>	<b>1140</b>	<b>301</b>	<b>55</b>
<b>MARCH</b>	<b>2721</b>	<b>1446</b>	<b>373</b>	<b>98</b>
<b>APRIL</b>	<b>1601</b>	<b>916</b>	<b>238</b>	<b>118</b>
<b>MAY</b>	<b>1777</b>	<b>1025</b>	<b>310</b>	<b>216</b>
<b>JUNE</b>	<b>1907</b>	<b>895</b>	<b>281</b>	<b>121</b>
<b>JULY</b>	<b>1581</b>	<b>1125</b>	<b>212</b>	<b>121</b>
<b>AUGUST</b>	<b>1542</b>	<b>1536</b>	<b>238</b>	<b>130</b>
<b>SEPTEMBER</b>	<b>1594</b>	<b>1645</b>	<b>254</b>	<b>158</b>
<b>OCTOBER</b>	<b>1960</b>	<b>2014</b>	<b>253</b>	<b>245</b>
<b>NOVEMBER</b>	<b>1615</b>	<b>2010</b>	<b>212</b>	<b>246</b>
<b>DECEMBER</b>	<b>3222</b>	<b>2544</b>	<b>425</b>	<b>225</b>
<b>TOTAL</b>	<b>24459</b>	<b>17333</b>	<b>3414</b>	<b>1807</b>

## GRAND TOTAL

**OUTPATIENTS: 41792**

**INPATIENTS: 5221**



# DEPARTMENT OF DERMATOLOGY

<i>MONTH</i>	<i>OUT- PATIENTS NEW</i>	<i>OUT- PATIENT OLD</i>	<i>IN- PATIENTS</i>
<i>JANUARY</i>	<i>2104</i>	<i>517</i>	<i>15</i>
<i>FEBRUARY</i>	<i>1963</i>	<i>801</i>	<i>24</i>
<i>MARCH</i>	<i>2134</i>	<i>768</i>	<i>16</i>
<i>APRIL</i>	<i>1890</i>	<i>660</i>	<i>19</i>
<i>MAY</i>	<i>2148</i>	<i>868</i>	<i>18</i>
<i>JUNE</i>	<i>2184</i>	<i>1239</i>	<i>37</i>
<i>JULY</i>	<i>2102</i>	<i>1212</i>	<i>37</i>
<i>AUGUST</i>	<i>1833</i>	<i>1512</i>	<i>27</i>
<i>SEPTEMBER</i>	<i>2311</i>	<i>2001</i>	<i>29</i>
<i>OCTOBER</i>	<i>1949</i>	<i>2151</i>	<i>28</i>
<i>NOVEMBER</i>	<i>1605</i>	<i>1500</i>	<i>17</i>
<i>DECEMBER</i>	<i>2656</i>	<i>2765</i>	<i>35</i>
<i>TOTAL</i>	<i>24879</i>	<i>15994</i>	<i>302</i>



## GRAND TOTAL

**OUTPATIENTS: 40873**

**INPATIENTS: 302**



# DEPARTMENT OF PSYCHIATRY

MONTH	OUT-PATIENTS NEW	OUT-PATIENTS OLD	IN-PATIENTS
JANUARY	301	692	30
FEBRUARY	400	674	30
MARCH	521	725	30
APRIL	325	691	26
MAY	367	718	32
JUNE	456	777	38
JULY	432	845	34
AUGUST	650	785	21
SEPTEMBER	1456	1066	35
OCTOBER	1571	1685	39
NOVEMBER	1501	793	34
DECEMBER	1253	1614	35
<b>TOTAL</b>	<b>9233</b>	<b>11065</b>	<b>384</b>

## GRAND TOTAL

**OUTPATIENTS: 20298**

**INPATIENTS: 384**





# DEPARTMENT OF SURGERY

<b>MONTH</b>	<b>OUT- PATIENTS NEW</b>	<b>OUT- PATIENTS OLD</b>	<b>IN- PATIENTS</b>
<b>JANUARY</b>	<b>3637</b>	<b>1803</b>	<b>193</b>
<b>FEBRUARY</b>	<b>3899</b>	<b>2289</b>	<b>241</b>
<b>MARCH</b>	<b>3058</b>	<b>1285</b>	<b>228</b>
<b>APRIL</b>	<b>2792</b>	<b>1118</b>	<b>240</b>
<b>MAY</b>	<b>1798</b>	<b>2513</b>	<b>237</b>
<b>JUNE</b>	<b>2694</b>	<b>2022</b>	<b>337</b>
<b>JULY</b>	<b>3180</b>	<b>1234</b>	<b>325</b>
<b>AUGUST</b>	<b>2130</b>	<b>2377</b>	<b>303</b>
<b>SEPTEMBER</b>	<b>2745</b>	<b>2108</b>	<b>327</b>
<b>OCTOBER</b>	<b>3200</b>	<b>1495</b>	<b>324</b>
<b>NOVEMBER</b>	<b>2297</b>	<b>1986</b>	<b>211</b>
<b>DECEMBER</b>	<b>2999</b>	<b>2726</b>	<b>243</b>
<b>TOTAL</b>	<b>34429</b>	<b>22956</b>	<b>3209</b>

## **GRAND TOTAL:**

**OUTPATIENTS: 57385**

**INPATIENTS: 3209**



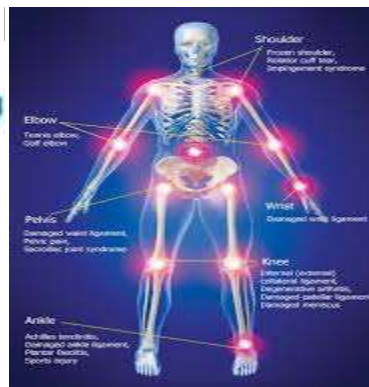
# DEPARTMENT OF ORTHOPEDICS

MONTH	OUT-PATIENTS NEW	OUT-PATIENTS OLD	IN-PATIENTS
JANUARY	3637	1803	119
FEBRUARY	3899	2289	135
MARCH	4874	2207	129
APRIL	3902	1973	122
MAY	3972	2014	145
JUNE	3658	3121	155
JULY	4212	2212	151
AUGUST	3517	3111	165
SEPTEMBER	3248	3656	112
OCTOBER	4067	2415	158
NOVEMBER	3035	2500	129
DECEMBER	3927	4212	134
<b>TOTAL</b>	<b>45948</b>	<b>31513</b>	<b>1654</b>

## GRAND TOTAL

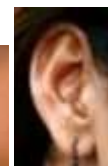
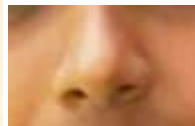
**OUTPATIENTS: 77461**

**INPATIENTS: 1654**



# DEPARTMENT OF ENT

<b>MONTH</b>	<b>OUT-PATIENTS NEW</b>	<b>OUT-PATIENTS OLD</b>	<b>IN-PATIENTS</b>
<b>JANUARY</b>	<b>1971</b>	<b>317</b>	<b>34</b>
<b>FEBRUARY</b>	<b>1914</b>	<b>807</b>	<b>34</b>
<b>MARCH</b>	<b>2313</b>	<b>822</b>	<b>26</b>
<b>APRIL</b>	<b>1848</b>	<b>726</b>	<b>27</b>
<b>MAY</b>	<b>1685</b>	<b>1012</b>	<b>45</b>
<b>JUNE</b>	<b>1456</b>	<b>1307</b>	<b>45</b>
<b>JULY</b>	<b>1645</b>	<b>1179</b>	<b>68</b>
<b>AUGUST</b>	<b>1900</b>	<b>891</b>	<b>46</b>
<b>SEPTEMBER</b>	<b>1888</b>	<b>1048</b>	<b>34</b>
<b>OCTOBER</b>	<b>1426</b>	<b>1478</b>	<b>42</b>
<b>NOVEMBER</b>	<b>1174</b>	<b>1111</b>	<b>38</b>
<b>DECEMBER</b>	<b>1862</b>	<b>1875</b>	<b>23</b>
<b>TOTAL</b>	<b>21082</b>	<b>12573</b>	<b>462</b>



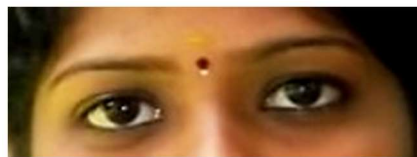
## **GRAND TOTAL**

**OUTPATIENTS: 33655**

**INPATIENTS: 462**

# DEPARTMENT OF OPHTHALMOLOGY

<i>MONTH</i>	<i>OUT-PATIENTS NEW</i>	<i>OUT-PATIENTS OLD</i>	<i>IN-PATIENTS</i>
<i>JANUARY</i>	<i>1245</i>	<i>865</i>	<i>25</i>
<i>FEBRUARY</i>	<i>1361</i>	<i>1216</i>	<i>32</i>
<i>MARCH</i>	<i>1744</i>	<i>1224</i>	<i>43</i>
<i>APRIL</i>	<i>1469</i>	<i>1045</i>	<i>35</i>
<i>MAY</i>	<i>1534</i>	<i>1012</i>	<i>36</i>
<i>JUNE</i>	<i>1523</i>	<i>1172</i>	<i>41</i>
<i>JULY</i>	<i>1656</i>	<i>1126</i>	<i>47</i>
<i>AUGUST</i>	<i>1865</i>	<i>1131</i>	<i>47</i>
<i>SEPTEMBER</i>	<i>1248</i>	<i>1515</i>	<i>43</i>
<i>OCTOBER</i>	<i>1414</i>	<i>1365</i>	<i>39</i>
<i>NOVEMBER</i>	<i>1109</i>	<i>986</i>	<i>23</i>
<i>DECEMBER</i>	<i>2324</i>	<i>1424</i>	<i>15</i>
<i>TOTAL</i>	<i>18492</i>	<i>14081</i>	<i>426</i>



**GRAND TOTAL**  
**OUTPATIENTS: 32573**  
**INPATIENTS: 426**

# OPERATION THEATRE

## MAJOR & MINOR OPERATIONS- 2015

SERVICES	SURGERY		ORTHO		ENT		OPHTHAL		DENTAL		GYNAE	
	MAJOR	MINOR	MAJOR	MINOR	MAJOR	MINOR	MAJOR	MINOR	MAJOR	MINOR	MAJOR	MINOR
JANUARY	55	38	22	4	3	10	18	4	0	0	46	1
FEBRUARY	91	60	27	0	9	9	22	1	2	0	68	0
MARCH	97	47	33	3	9	11	27	1	3	0	73	2
APRIL	99	60	26	0	6	13	31	3	0	0	85	2
MAY	99	70	37	2	13	14	23	1	0	0	84	3
JUNE	141	57	32	1	12	14	26	0	2	0	74	2
JULY	126	65	44	2	13	13	38	2	2	0	69	0
AUGUST	117	46	39	12	13	10	34	0	4	0	84	1
SEPTEMBER	119	50	41	2	11	18	31	1	1	0	78	2
OCTOBER	112	60	30	2	9	7	35	0	3	0	79	2
NOVEMBER	78	33	33	4	7	10	19	0	1	0	68	1
DECEMBER	74	48	35	4	8	7	12	0	1	0	66	0
<b>TOTAL</b>	<b>1208</b>	<b>634</b>	<b>399</b>	<b>36</b>	<b>113</b>	<b>136</b>	<b>316</b>	<b>13</b>	<b>19</b>	<b>0</b>	<b>874</b>	<b>16</b>

### GRAND TOTAL

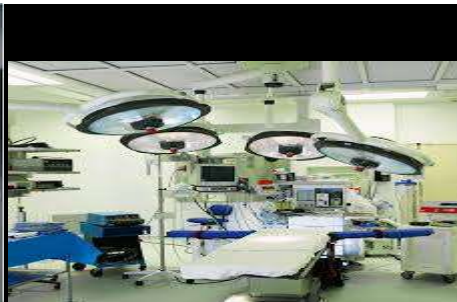
**MAJOR OPERATIONS: 2929**

**MINOR OPERATIONS: 835**



# MINOR OT PROCEDURES IN OPD

<b>MINOR O.T PROCEDURES IN OPD-2015</b>							
<b>SERVICES</b>	<b>OPHTHAL</b>	<b>DERMAT</b>	<b>ENT</b>	<b>ORTHO</b>	<b>SURGERY</b>	<b>O&amp;G</b>	<b>DENTAL</b>
	<b>MINOR</b>	<b>MINOR</b>	<b>MINOR</b>	<b>MINOR</b>	<b>MINOR</b>	<b>MINOR</b>	<b>MINOR</b>
<b>JANUARY</b>	<b>90</b>	<b>89</b>	<b>114</b>	<b>9</b>	<b>208</b>	<b>20</b>	<b>225</b>
<b>FEBRUARY</b>	<b>168</b>	<b>51</b>	<b>115</b>	<b>21</b>	<b>198</b>	<b>12</b>	<b>258</b>
<b>MARCH</b>	<b>153</b>	<b>34</b>	<b>123</b>	<b>28</b>	<b>230</b>	<b>18</b>	<b>286</b>
<b>APRIL</b>	<b>150</b>	<b>96</b>	<b>150</b>	<b>22</b>	<b>218</b>	<b>20</b>	<b>260</b>
<b>MAY</b>	<b>110</b>	<b>90</b>	<b>108</b>	<b>61</b>	<b>265</b>	<b>11</b>	<b>234</b>
<b>JUNE</b>	<b>243</b>	<b>123</b>	<b>182</b>	<b>57</b>	<b>356</b>	<b>84</b>	<b>265</b>
<b>JULY</b>	<b>186</b>	<b>133</b>	<b>145</b>	<b>25</b>	<b>378</b>	<b>96</b>	<b>321</b>
<b>AUGUST</b>	<b>192</b>	<b>145</b>	<b>165</b>	<b>20</b>	<b>386</b>	<b>78</b>	<b>302</b>
<b>SEPTEMBER</b>	<b>201</b>	<b>117</b>	<b>178</b>	<b>18</b>	<b>402</b>	<b>65</b>	<b>298</b>
<b>OCTOBER</b>	<b>198</b>	<b>123</b>	<b>201</b>	<b>20</b>	<b>412</b>	<b>102</b>	<b>333</b>
<b>NOVEMBER</b>	<b>221</b>	<b>141</b>	<b>212</b>	<b>22</b>	<b>398</b>	<b>85</b>	<b>309</b>
<b>DECEMBER</b>	<b>187</b>	<b>198</b>	<b>175</b>	<b>20</b>	<b>489</b>	<b>72</b>	<b>412</b>
<b>TOTAL</b>	<b>2099</b>	<b>1340</b>	<b>1868</b>	<b>323</b>	<b>3940</b>	<b>663</b>	<b>3503</b>
<b>GRAND TOTAL</b>							
<b>OVERALL MINOR OPERATIONS : 13736</b>							





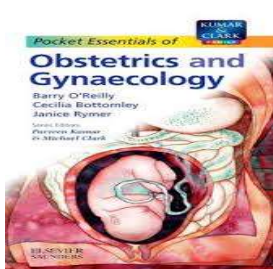
# DEPARTMENT OF GYNAECOLOGY

<b>MONTH</b>	<b>OUT-PATIENTS NEW</b>	<b>OUT-PATIENTS OLD</b>	<b>IN-PATIENTS</b>
<b>JANUARY</b>	<b>891</b>	<b>814</b>	<b>97</b>
<b>FEBRUARY</b>	<b>1028</b>	<b>950</b>	<b>110</b>
<b>MARCH</b>	<b>1114</b>	<b>1026</b>	<b>127</b>
<b>APRIL</b>	<b>1056</b>	<b>837</b>	<b>139</b>
<b>MAY</b>	<b>1084</b>	<b>999</b>	<b>151</b>
<b>JUNE</b>	<b>1423</b>	<b>702</b>	<b>134</b>
<b>JULY</b>	<b>1121</b>	<b>1033</b>	<b>132</b>
<b>AUGUST</b>	<b>1023</b>	<b>1044</b>	<b>131</b>
<b>SEPTEMBER</b>	<b>1121</b>	<b>1090</b>	<b>132</b>
<b>OCTOBER</b>	<b>1450</b>	<b>879</b>	<b>127</b>
<b>NOVEMBER</b>	<b>1006</b>	<b>865</b>	<b>102</b>
<b>DECEMBER</b>	<b>1831</b>	<b>2561</b>	<b>146</b>
<b>TOTAL</b>	<b>14148</b>	<b>12800</b>	<b>1528</b>

## GRAND TOTAL

**OUTPATIENTS: 26948**

**INPATIENTS: 1528**





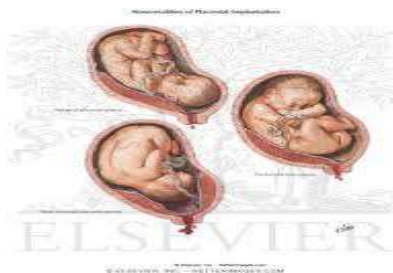
# DEPARTMENT OF OBSTETRICS

<i>MONTH</i>	<i>OUT- PATIENTS NEW</i>	<i>OUT- PATIENTS OLD</i>	<i>IN- PATIENTS</i>
<b>JANUARY</b>	<b>292</b>	<b>775</b>	<b>174</b>
<b>FEBRUARY</b>	<b>381</b>	<b>841</b>	<b>167</b>
<b>MARCH</b>	<b>326</b>	<b>1074</b>	<b>212</b>
<b>APRIL</b>	<b>308</b>	<b>1117</b>	<b>198</b>
<b>MAY</b>	<b>458</b>	<b>978</b>	<b>248</b>
<b>JUNE</b>	<b>567</b>	<b>875</b>	<b>219</b>
<b>JULY</b>	<b>865</b>	<b>578</b>	<b>209</b>
<b>AUGUST</b>	<b>852</b>	<b>682</b>	<b>246</b>
<b>SEPTEMBER</b>	<b>531</b>	<b>965</b>	<b>235</b>
<b>OCTOBER</b>	<b>852</b>	<b>745</b>	<b>284</b>
<b>NOVEMBER</b>	<b>646</b>	<b>564</b>	<b>279</b>
<b>DECEMBER</b>	<b>1212</b>	<b>1077</b>	<b>251</b>
<b>TOTAL</b>	<b>7290</b>	<b>10271</b>	<b>2722</b>

## GRAND TOTAL

**OUTPATIENTS: 17561**

**INPATIENTS: 2722**



# DEPARTMENT OF DENTISTRY

<b>MONTH</b>	<b>OUT- PATIENTS NEW</b>	<b>OUT- PATIENTS OLD</b>	<b>IN- PATIENTS</b>
<b>JANUARY</b>	<b>548</b>	<b>266</b>	<b>1</b>
<b>FEBRUARY</b>	<b>635</b>	<b>391</b>	<b>1</b>
<b>MARCH</b>	<b>596</b>	<b>574</b>	<b>2</b>
<b>APRIL</b>	<b>425</b>	<b>674</b>	<b>0</b>
<b>MAY</b>	<b>321</b>	<b>630</b>	<b>0</b>
<b>JUNE</b>	<b>425</b>	<b>604</b>	<b>5</b>
<b>JULY</b>	<b>558</b>	<b>542</b>	<b>3</b>
<b>AUGUST</b>	<b>645</b>	<b>469</b>	<b>2</b>
<b>SEPTEMBER</b>	<b>748</b>	<b>507</b>	<b>3</b>
<b>OCTOBER</b>	<b>821</b>	<b>517</b>	<b>5</b>
<b>NOVEMBER</b>	<b>412</b>	<b>486</b>	<b>1</b>
<b>DECEMBER</b>	<b>1002</b>	<b>1075</b>	<b>3</b>
<b>TOTAL</b>	<b>7136</b>	<b>6735</b>	<b>26</b>

**GRAND TOTAL**

**OUTPATIENTS: 13871**

**INPATIENTS: 26**

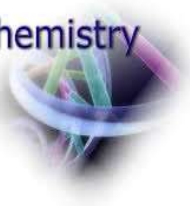


# DEPARTMENT OF BIOCHEMISTRY

MONTH	BIO-CHEMISTRY	
	O.P	I.P
JANUARY	6926	12459
FEBRUARY	7423	14388
MARCH	8615	16230
APRIL	6944	11799
MAY	6463	13556
JUNE	8490	17,656
JULY	8695	21789
AUGUST	9152	23372
SEPTEMBER	10784	22547
OCTOBER	11359	25241
NOVEMBER	8990	21995
DECEMBER	11303	22097
TOTAL	105144	223129

**GRAND TOTAL:**  
**BIOCHEMISTRY: 328273**

Biochemistry



# DEPARTMENT OF MICROBIOLOGY

MONTH	BACTERIOLOGY		SEROLOGY		PARASITOLOGY		HIV	
	O.P	I.P	O.P	I.P	O.P	I.P	GEN	ANC
JANUARY	468	678	736	515	24	83	146	120
FEBRUARY	558	746	757	501	53	90	218	144
MARCH	634	841	776	692	27	110	132	145
APRIL	457	626	608	542	21	128	175	129
MAY	508	673	626	389	30	139	195	200
JUNE	560	739	708	499	34	122	218	145
JULY	539	920	620	595	25	145	225	110
AUGUST	506	800	721	644	14	115	261	140
SEPTEMBER	694	809	850	697	24	79	258	130
OCTOBER	617	916	1110	974	34	62	284	137
NOVEMBER	559	764	897	804	14	77	218	115
DECEMBER	641	813	1065	874	24	87	249	162
TOTAL	6741	9325	9474	7726	324	1237	2579	1677

**GRAND TOTAL:**

**BACTERIOLOGY: 16066**

**SEROLOGY: 17200**

**PARASITOLOGY: 1561**

**HIV: 4256**



# DEPARTMENT OF PATHOLOGY

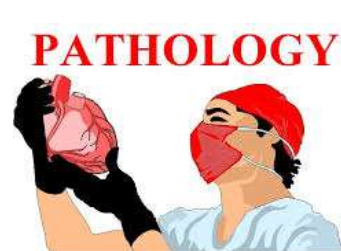
MONTH	HAEMATOLOGY		HISTO-PATHOLOGY		CYTOPATHOLOGY	
	O.P	I.P	O.P	I.P	O.P	I.P
JANUARY	8893	9362	49	103	93	16
FEBRUARY	1520	10330	150	62	188	40
MARCH	11529	10016	102	170	91	11
APRIL	8879	9981	97	240	219	9
MAY	9589	10171	87	172	320	7
JUNE	40,410	49,860	485	412	911	83
JULY	11475	13105	118	163	37	175
AUGUST	11537	14449	97	182	157	42
SEPTEMBER	11589	12388	109	184	172	40
OCTOBER	16164	16081	118	195	162	48
NOVEMBER	11660	13725	104	152	117	23
DECEMBER	12883	15009	107	167	26	114
TOTAL	156128	184477	1623	2202	2493	608

## GRAND TOTAL

**HAEMATOLOGY: 340605**

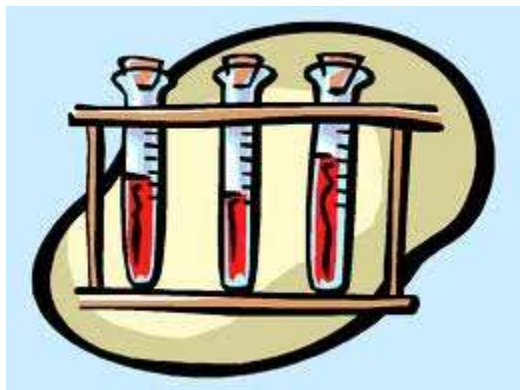
**HISTOPATHOLOGY: 3825**

**CYTOPATHOLOGY: 3101**



# BLOOD BANK

MONTH	REQUEST RECEIVED	CROSS MATCHING	ISSUES	BAGS DISCARDED	NO.OF BLOOD GROUPING DONE
JANUARY	303	78	95	28	408
FEBRUARY	309	78	100	24	433
MARCH	310	94	120	17	408
APRIL	381	131	148	10	518
MAY	467	133	180	19	650
JUNE	654	136	165	17	818
JULY	553	130	201	11	785
AUGUST	442	133	247	8	711
SEPTEMBER	64	108	155	10	827
OCTOBER	495	97	188	7	729
NOVEMBER	444	94	164	45	660
DECEMBER	444	104	232	7	647
TOTAL	4866	1316	1995	203	7594





# DEPARTMENT OF RADIOLOGY

MONTH	X-RAY		ULTRA-SOUND		SPECIAL INVESTIGATIONS		CT – SCAN	
	O.P	I.P	O.P	I.P	O.P	I.P	O.P	I.P
JANUARY	2430	763	571	269	2	2	-	-
FEBRUARY	2294	774	579	288	5	2	-	-
MARCH	2803	972	672	37	3	6	-	-
APRIL	2399	697	708	237	6	4	-	-
MAY	2467	806	699	249	0	0	-	-
JUNE	2123	650	672	227	3	7	-	-
JULY	1819	1077	818	319	9	8	8	36
AUGUST	2114	1128	854	280	4	3	35	105
SEPTEMBER	3194	1139	878	302	9	4	32	84
OCTOBER	3119	1074	857	232	3	2	65	98
NOVEMBER	2670	1007	686	271	4	5	75	108
DECEMBER	2947	1050	780	251	7	5	72	96
TOTAL	30379	11137	8774	2962	55	48	287	527

**GRAND TOTAL:**

**X-RAY: 41516**

**ULTRASOUND: 11736**

**SPECIAL INVESTIGATIONS: 103**

**CT – SCAN : 814**







# DELIVERIES REPORT

OBSTETRICS CASES			
NO. OF SVD AND LSCS			
MONTH	SVD	LSCS	TOTAL
JANUARY	105	31	136
FEBRUARY	74	31	105
MARCH	96	49	145
APRIL	83	53	136
MAY	128	64	193
JUNE	115	47	162
JULY	107	41	148
AUGUST	130	46	176
SEPTEMBER	136	51	187
OCTOBER	161	41	202
NOVEMBER	159	49	208
DECEMBER	147	41	188
<b>TOTAL</b>	<b>1441</b>	<b>544</b>	<b>1985</b>

NEWBORN CASES			
MONTH	MALE	FEMALE	TOTAL
JANUARY	61	75	136
FEBRUARY	61	44	105
MARCH	73	72	145
APRIL	70	66	136
MAY	100	92	193
JUNE	90	72	162
JULY	68	80	148
AUGUST	91	85	176
SEPTEMBER	101	86	187
OCTOBER	103	99	202
NOVEMBER	97	111	208
DECEMBER	97	91	188
<b>TOTAL</b>	<b>1012</b>	<b>973</b>	<b>1985</b>

## **GRAND TOTAL**

**NO. OF SVD : 1441**

**NO. OF LSCS: 544**

**NO. OF STILL BIRTH : 13**



# DEPARTMENT OF FORENSIC MEDICINE

POST MORTEM CASES				
MONTH	MALE	FEMALE	AMBIGUOS	TOTAL
JANUARY	93	24	0	117
FEBRUARY	72	10	0	82
MARCH	78	22	0	100
APRIL	87	23	0	110
MAY	91	15	0	106
JUNE	81	24	1	106
JULY	105	17	0	122
AUGUST	94	13	0	107
SEPTEMBER	79	20	0	99
OCTOBER	105	19	0	124
NOVEMBER	104	17	0	121
DECEMBER	106	21	0	127
<b>TOTAL</b>	<b>1095</b>	<b>225</b>	<b>1</b>	<b>1321</b>

MONTH	JAN	FEB	MAR	APR	MAY	JUNE	JULY	AUG	SEP	OCT	NOV	DEC	TOTAL
RTA	27	15	17	14	19	21	19	17	14	21	17	15	216
BURNS	9	3	5	8	8	6	2	4	4	4	3	2	58
HANGING	20	25	23	19	32	15	28	25	19	30	17	24	277
POISONING	12	4	4	15	13	13	5	5	3	5	6	5	90
INJURIES	4	6	10	12	5	13	23	5	6	7	4	3	98
BROUGHT DEAD	17	12	10	14	10	15	20	39	38	45	48	55	323
DROWNING	1	5	8	5	3	2	4	2	2	0	6	6	44
CARDIAC ILLNESS	13	7	8	12	9	9	0	0	0	0	0	0	58
AWAITING REPORT	15	3	12	14	7	13	10	3	0	0	0	0	77
ELECTROCUTION	0	0	0	0	0	0	1	3	3	1	2	2	12
OVER ALCOHOL	0	0	0	0	0	0	0	4	0	3	10	4	21
OTHERS	0	0	0	0	0	11	5	11	11	10	11	13	72
<b>TOTAL</b>	<b>118</b>	<b>80</b>	<b>97</b>	<b>113</b>	<b>106</b>	<b>118</b>	<b>117</b>	<b>118</b>	<b>100</b>	<b>126</b>	<b>124</b>	<b>129</b>	<b>1346</b>



# DEPARTMENT OF COMMUNITY MEDICINE

## LAWSPET CENTRE

MONTH	OUT - PATIENTS		ANTENATAL		UNDER FIVE		TUBERCULOSIS		EMERGENCY CASES	CASES REFERRED	TOTAL
	OLD	NEW	OLD	NEW	OLD	NEW	OLD	NEW			
JAN UARY	1189	648	40	224	173	13	4	41	4	22	2358
FEBRUARY	1714	1034	285	15	7	60	7	60	12	7	3201
MARCH	1497	297	37	264	139	20	10	55	6	27	2352
APRIL	825	391	249	72	130	12	8	68	8	12	1775
MAY	775	463	121	5	8	62	8	62	20	16	1540
JUNE	692	664	67	2	6	60	6	60	18	16	1591
JULY	833	256	77	231	67	21	5	60	9	20	1579
AUGUST	885	473	64	250	121	5	8	62	30	24	1922
SEPTEMBER	756	312	55	185	175	6	5	52	25	21	1592
OCTOBER	1193	666	52	237	121	39	9	53	18	12	2400
NOVEMBER	1456	782	66	230	136	98	8	54	18	20	2868
DECEMBER	1089	715	68	238	130	39	7	54	18	12	2370
<b>TOTAL</b>	<b>12904</b>	<b>6701</b>	<b>1181</b>	<b>1953</b>	<b>1213</b>	<b>435</b>	<b>85</b>	<b>681</b>	<b>186</b>	<b>209</b>	<b>25548</b>

**GRAND TOTAL: 25548 (LAWSPET)**

**OUT-PATIENTS: 19605**

**ANTENATAL: 3134**

**UNDERFIVE: 1648**

**TUBERCULOSIS: 766**

**EMERGENCY CASES: 186**

**CASES REFERRED: 209**

# DEPARTMENT OF COMMUNITY MEDICINE

## KARIKALAMPAKKAM CENTRE

MONTH	OUT - PATIENTS		ANTENATAL		UNDER FIVE		TUBERCULOSIS		EMERGENCY CASES	CASES REFERRED	TUBECTOMY	TOTAL
	OLD	NEW	OLD	NEW	OLD	NEW	OLD	NEW				
APRIL	16530	3624	43	103	893	660	18	4	8500	230	0	30605
MAY	5261	3268	36	31	900	756	5	19	9060	243	5	19584
JUNE	7195	2490	32	120	1150	450	3	15	8591	221	0	20267
JULY	7238	1085	35	107	864	330	0	19	6652	227	1	16558
AUGUST	7843	1175	29	106	635	351	5	14	7311	209	3	17681
SEPTEMBER	7050	1767	30	105	863	378	4	19	7676	234	0	18126
OCTOBER	8739	1190	90	1	773	397	2	18	9503	222	0	20935
NOVEMBER	8336	1700	22	86	2200	496	3	15	8817	247	1	21923
DECEMBER	8350	1700	38	100	2096	600	2	19	8321	148	1	21375
TOTAL	76542	17999	355	759	10374	4418	42	142	74431	1981	11	187054

**GRAND TOTAL: 187054 (KARIKALAMPAKKAM)**

**OUT-PATIENTS: 94541**

**ANTENATAL: 1114**

**UNDERFIVE: 14792**

**TUBERCULOSIS: 184**

**EMERGENCY CASES: 74431**

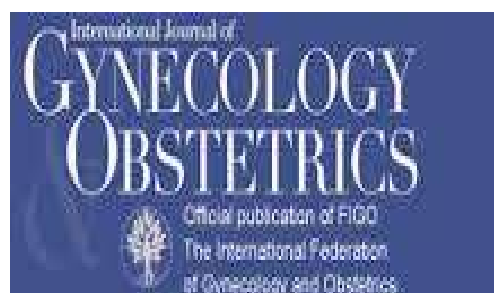
**CASES REFERRED: 1981**

**TUBECTOMY : 11**

# INFERTILITY CLINIC

<i>MONTH</i>	<i>NO.OF PATIENTS</i>
<i>JANUARY</i>	<i>75</i>
<i>FEBRUARY</i>	<i>83</i>
<i>MARCH</i>	<i>42</i>
<i>APRIL</i>	<i>36</i>
<i>MAY</i>	<i>48</i>
<i>JUNE</i>	<i>57</i>
<i>JULY</i>	<i>71</i>
<i>AUGUST</i>	<i>61</i>
<i>SEPTEMBER</i>	<i>55</i>
<i>OCTOBER</i>	<i>76</i>
<i>NOVEMBER</i>	<i>59</i>
<i>DECEMBER</i>	<i>76</i>
<i>TOTAL</i>	<i>739</i>

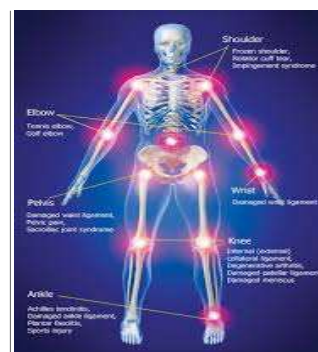
**GRAND TOTAL: 739**



# DEPARTMENT OF PHYSIOTHERAPY

MONTH	OUT-PATIENT NEW	OUT-PATIENT OLD
<b>JANUARY</b>	<b>301</b>	<b>692</b>
<b>FEBRUARY</b>	<b>400</b>	<b>674</b>
<b>MARCH</b>	<b>521</b>	<b>725</b>
<b>APRIL</b>	<b>425</b>	<b>1452</b>
<b>MAY</b>	<b>475</b>	<b>1045</b>
<b>JUNE</b>	<b>532</b>	<b>1227</b>
<b>JULY</b>	<b>1345</b>	<b>916</b>
<b>AUGUST</b>	<b>1321</b>	<b>954</b>
<b>SEPTEMBER</b>	<b>1228</b>	<b>986</b>
<b>OCTOBER</b>	<b>1101</b>	<b>1169</b>
<b>NOVEMBER</b>	<b>895</b>	<b>829</b>
<b>DECEMBER</b>	<b>546</b>	<b>465</b>
<b>TOTAL</b>	<b>9090</b>	<b>11134</b>

**GRAND TOTAL : 20224**





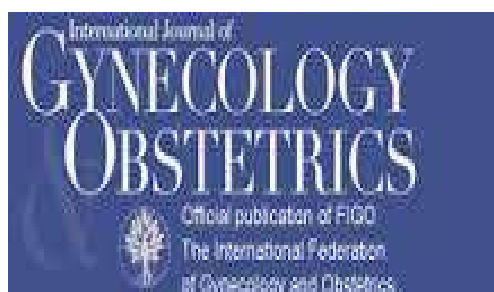
# OG PROCEDURES - 2015

MONTH	TUBECTOMY	MTP
JANUARY	43	3
FEBRUARY	70	14
MARCH	53	7
APRIL	93	17
MAY	91	14
JUNE	64	11
JULY	98	17
AUGUST	124	12
SEPTEMBER	132	15
OCTOBER	112	17
NOVEMBER	96	15
DECEMBER	111	10
<b>TOTAL</b>	<b>1087</b>	<b>152</b>

**GRAND TOTAL**

**TUBECTOMY: 1087**

**MTP: 152**



# ENT PROCEDURES

## ENT PROCEDURES

ENT CASES		MAY	JUNE	JULY	AUG	SEP	OCT	NOV	DEC	TOTAL
AUDIOMETRY	PURE TONE AUDIOMETRY	59	69	71	73	74	88	120	123	677
	SPEECH AUDIOMETRY	1	1	0	0	2	10	8	16	38
	SPECIAL TEST (SISI), (TDT)	0	2	3	8	3	17	16	21	70
	HEARING AID FITTING	0	3	1	0	0	4	3	2	13
TOTAL		60	75	75	81	79	119	147	162	798
SPEECH TRAINING	SPEECH ASSESSMENT	23	20	20	19	17	13	15	14	141
	SPEECH THERAPY	39	35	48	26	33	71	76	83	411
TOTAL		62	55	68	45	50	84	91	97	552

**GRAND TOTAL : 1350**

**AUDIOMETRY: 798**

**SPEECH TRAINING: 552**

# A R T REPORT

## FOLLOW UP CASES

MONTH	ADULT			INFANT		TOTAL
	MALE	FEMALE	AMBIGUOS	MALE	FEMALE	
JANUARY	468	469	5	37	35	1014
FEBRUARY	468	469	5	37	36	1015
MARCH	476	467	6	37	37	1023
APRIL	478	471	6	37	38	1030
MAY	479	470	6	36	38	1029
JUNE	477	471	5	35	38	1026
JULY	477	471	5	35	38	1026
AUGUST	477	474	5	37	38	1031
SEPTEMBER	479	477	5	39	38	1038
OCTOBER	488	477	5	40	39	1049
NOVEMBER	485	483	5	40	39	1052
DECEMBER	482	475	4	39	38	1038
TOTAL	5734	5674	62	449	452	12371

**TOTAL FOLLOW-UP CASES = 12371**

**TOTAL A R T CASES = 2,083**

**TOTAL PRE – A R T CASES = 2,616**

**TOTAL PREGNANCY CASES = 8**

THANK U!!!!!!