

INDIRA GANDHI MEDICAL COLLEGE & RESEARCH INSTITUTE
KATHIRKAMAM, PUDUCHERRY



MEDICAL RECORDS DEPARTMENT

ANNUAL REPORT FOR THE YEAR
2014

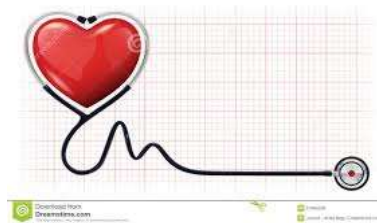
EMERGENCY MEDICINE

CASUALTY ATTENDENCE	101762
CASUALTY ADMISSION	2122
CASES EXPIRED	65
POISONING	463
RTA	459
BURNS	37
ASSAULT	421
INJURY	179
HANGING	9
ELECTROCUTION	14
UNKNOWN BITE	28
SNAKE BITE	11
BROUGHT DEAD	70



DEPARTMENT OF MEDICINE

<i>MONTH</i>	<i>OUT- PATIENTS NEW</i>	<i>OUT- PATIENTS OLD</i>	<i>IN- PATIENTS</i>
<i>JANUARY</i>	<i>4006</i>	<i>4428</i>	<i>453</i>
<i>FEBRUARY</i>	<i>3886</i>	<i>4466</i>	<i>254</i>
<i>MARCH</i>	<i>4550</i>	<i>5201</i>	<i>307</i>
<i>APRIL</i>	<i>3130</i>	<i>5572</i>	<i>276</i>
<i>MAY</i>	<i>4518</i>	<i>5931</i>	<i>299</i>
<i>JUNE</i>	<i>4910</i>	<i>4710</i>	<i>273</i>
<i>JULY</i>	<i>5445</i>	<i>4689</i>	<i>282</i>
<i>AUGUST</i>	<i>3569</i>	<i>5896</i>	<i>279</i>
<i>SEPTEMBER</i>	<i>4181</i>	<i>5831</i>	<i>370</i>
<i>OCTOBER</i>	<i>3981</i>	<i>5190</i>	<i>325</i>
<i>NOVEMBER</i>	<i>1308</i>	<i>5447</i>	<i>349</i>
<i>DECEMBER</i>	<i>4325</i>	<i>7610</i>	<i>407</i>
<i>TOTAL</i>	<i>52154</i>	<i>64971</i>	<i>3874</i>



GRAND TOTAL

OUTPATIENTS: 117125

INPATIENTS: 3874

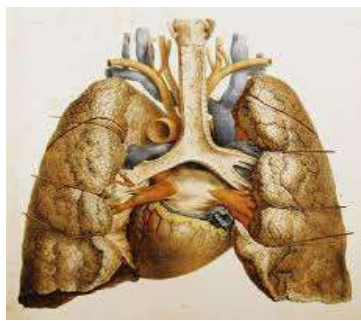
DEPARTMENT OF RESPIRATORY MEDICINE

MONTH	OUT-PATIENTS NEW	OUT-PATIENTS OLD	IN-PATIENTS
JANUARY	1306	834	36
FEBRUARY	1745	678	46
MARCH	1273	956	49
APRIL	719	904	35
MAY	1010	752	37
JUNE	920	813	26
JULY	1108	833	31
AUGUST	1005	1236	19
SEPTEMBER	1225	897	26
OCTOBER	1111	584	22
NOVEMBER	1308	735	27
DECEMBER	1450	1130	35
TOTAL	14180	10352	389

GRAND TOTAL:

OUTPATIENTS: 24532

INPATIENTS: 389



DEPARTMENT OF PAEDIATRICS

MONTH	OUT-PATIENTS NEW	OUT-PATIENTS OLD	IN-PATIENTS
JANUARY	1794	911	119
FEBRUARY	1997	805	230
MARCH	2037	883	323
APRIL	1524	675	237
MAY	2052	729	295
JUNE	1713	761	285
JULY	1883	765	336
AUGUST	2078	1789	317
SEPTEMBER	1838	920	317
OCTOBER	1791	791	306
NOVEMBER	2429	876	417
DECEMBER	1234	2555	369
TOTAL	22370	12460	3551

GRAND TOTAL

OUTPATIENTS: 34830

INPATIENTS: 3551



DEPARTMENT OF DERMATOLOGY

<i>MONTH</i>	<i>OUT-PATIENTS NEW</i>	<i>OUT-PATIENTS OLD</i>	<i>IN-PATIENTS</i>
<i>JANUARY</i>	<i>1787</i>	<i>520</i>	<i>14</i>
<i>FEBRUARY</i>	<i>2007</i>	<i>510</i>	<i>27</i>
<i>MARCH</i>	<i>2202</i>	<i>646</i>	<i>25</i>
<i>APRIL</i>	<i>1662</i>	<i>840</i>	<i>25</i>
<i>MAY</i>	<i>1997</i>	<i>616</i>	<i>14</i>
<i>JUNE</i>	<i>1439</i>	<i>1286</i>	<i>21</i>
<i>JULY</i>	<i>2068</i>	<i>615</i>	<i>27</i>
<i>AUGUST</i>	<i>1423</i>	<i>1236</i>	<i>28</i>
<i>SEPTEMBER</i>	<i>2360</i>	<i>581</i>	<i>22</i>
<i>OCTOBER</i>	<i>1781</i>	<i>492</i>	<i>29</i>
<i>NOVEMBER</i>	<i>1824</i>	<i>627</i>	<i>10</i>
<i>DECEMBER</i>	<i>1136</i>	<i>1846</i>	<i>37</i>
<i>TOTAL</i>	<i>21686</i>	<i>9815</i>	<i>279</i>



GRAND TOTAL

OUTPATIENTS: 31501

INPATIENTS: 279

DEPARTMENT OF PSYCHIATRY

MONTH	OUT-PATIENTS NEW	OUT-PATIENTS OLD	IN-PATIENTS
JANUARY	171	592	19
FEBRUARY	170	606	13
MARCH	298	757	14
APRIL	184	659	13
MAY	210	639	13
JUNE	170	580	24
JULY	235	672	29
AUGUST	154	569	20
SEPTEMBER	467	697	27
OCTOBER	452	345	23
NOVEMBER	226	720	24
DECEMBER	325	711	26
TOTAL	3062	7547	245

GRAND TOTAL

OUTPATIENTS: 10609

INPATIENTS: 245



DEPARTMENT OF SURGERY

MONTH	OUT- PATIENTS NEW	OUT- PATIENTS OLD	IN- PATIENTS
JANUARY	2133	1365	202
FEBRUARY	2259	1253	181
MARCH	2548	1324	219
APRIL	2308	1405	158
MAY	2639	1551	174
JUNE	2700	1191	162
JULY	2700	1567	210
AUGUST	1899	1742	179
SEPTEMBER	2960	1390	370
OCTOBER	2596	1084	131
NOVEMBER	2620	1103	146
DECEMBER	1732	2499	171
TOTAL	26394	17474	2303

GRAND TOTAL:

OUTPATIENTS: 43868

INPATIENTS: 2303



DEPARTMENT OF ORTHOPEDICS

MONTH	OUT-PATIENTS NEW	OUT-PATIENTS OLD	IN-PATIENTS
JANUARY	2748	2179	122
FEBRUARY	3347	1931	139
MARCH	3980	2480	184
APRIL	2929	2771	117
MAY	3284	2431	185
JUNE	3390	1911	107
JULY	3607	2162	154
AUGUST	2789	2480	96
SEPTEMBER	3924	2265	96
OCTOBER	3595	1727	126
NOVEMBER	3723	2005	114
DECEMBER	3110	3501	155
TOTAL	40426	27843	1595

GRAND TOTAL

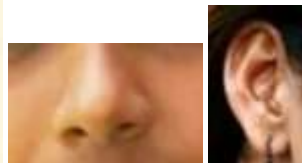
OUTPATIENTS: 68269

INPATIENTS: 1595



DEPARTMENT OF ENT

MONTH	OUT-PATIENTS NEW	OUT-PATIENTS OLD	IN-PATIENTS
JANUARY	1514	333	27
FEBRUARY	1611	371	38
MARCH	1685	806	48
APRIL	1342	858	38
MAY	1552	872	53
JUNE	1426	672	25
JULY	1487	712	41
AUGUST	1347	1096	33
SEPTEMBER	1886	765	55
OCTOBER	1699	468	37
NOVEMBER	1772	534	60
DECEMBER	1208	1438	45
TOTAL	18529	8925	500



GRAND TOTAL

OUTPATIENTS: 27454

INPATIENTS: 500

DEPARTMENT OF OPHTHALMOLOGY

MONTH	OUT-PATIENTS NEW	OUT-PATIENTS OLD	IN-PATIENTS
JANUARY	1143	803	30
FEBRUARY	1361	1031	36
MARCH	1576	1380	56
APRIL	1177	1178	34
MAY	1249	1183	47
JUNE	1125	1159	29
JULY	1309	1155	33
AUGUST	1020	978	26
SEPTEMBER	1336	1265	45
OCTOBER	1285	1092	8
NOVEMBER	1592	855	38
DECEMBER	1004	1371	44
TOTAL	15177	13450	426



GRAND TOTAL
OUTPATIENTS: 28627
INPATIENTS: 426

OPERATION THEATRE

MAJOR & MINOR OPERATIONS- 2014

SERVICES	SURGERY		ORTHO		ENT		OPHTHAL		DENTAL		PAED.SURG	
	MAJOR	MINOR	MAJOR	MINOR	MAJOR	MINOR	MAJOR	MINOR	MAJOR	MINOR	MAJOR	MINOR
JANUARY	66	15	25	0	16	6	25	1	1	0	7	1
FEBRUARY	97	22	20	0	25	13	31	2	1	0	5	0
MARCH	114	24	25	2	19	9	54	3	1	0	9	0
APRIL	85	22	22	1	19	9	22	0	3	1	4	0
MAY	104	12	25	0	29	11	38	1	1	0	19	1
JUNE	88	19	21	1	17	7	27	2	0	0	5	0
JULY	115	26	26	1	18	8	19	0	1	0	0	0
AUGUST	112	30	18	0	13	3	27	3	0	0	0	0
SEPTEMBER	89	27	20	1	17	5	36	5	0	0	0	0
OCTOBER	59	8	14	0	15	7	8	0	0	0	0	0
NOVEMBER	58	15	20	2	12	5	29	3	2	0	0	0
DECEMBER	65	23	15	3	4	2	16	1	1	0	0	0
TOTAL	1052	243	251	11	204	85	332	21	11	1	49	2

GRAND TOTAL

MAJOR OPERATIONS: 1899

MINOR OPERATIONS: 363



MINOR OT PROCEDURES IN OPD

MINOR O.T PROCEDURES IN OPD-2014							
SERVICES	OPHTHAL	DERMAT	ENT	ORTHO	SURGERY	OG	DENTAL
	MINOR	MINOR	MINOR	MINOR	MINOR	MINOR	MINOR
JANUARY	15	10	107	205	243	2	185
FEBRUARY	10	20	85	313	210	2	216
MARCH	12	15	136	434	251	2	320
APRIL	20	18	104	393	260	1	226
MAY	25	20	90	492	321	15	249
JUNE	36	22	107	520	294	3	236
JULY	88	30	99	483	264	16	253
AUGUST	129	50	110	285	291	4	328
SEPTEMBER	157	69	104	269	257	4	349
OCTOBER	76	52	84	252	200	2	236
NOVEMBER	87	41	128	337	195	2	532
DECEMBER	112	81	119	406	251	0	265
TOTAL	767	428	1701	4389	3037	53	3395
<u>GRAND TOTAL</u>							
OVERALL MINOR OPERATIONS : 13770							



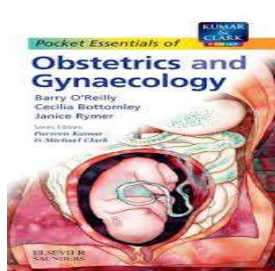
DEPARTMENT OF GYNAECOLOGY

MONTH	OUT-PATIENTS NEW	OUT-PATIENTS OLD	IN-PATIENTS
JANUARY	723	799	43
FEBRUARY	929	825	85
MARCH	1127	116	126
APRIL	852	1286	125
MAY	969	1215	113
JUNE	831	1030	113
JULY	927	1111	111
AUGUST	691	1102	114
SEPTEMBER	1133	1013	114
OCTOBER	895	755	88
NOVEMBER	775	1097	102
DECEMBER	973	1039	91
TOTAL	10825	11388	1357

GRAND TOTAL

OUTPATIENTS: 22213

INPATIENTS: 1357



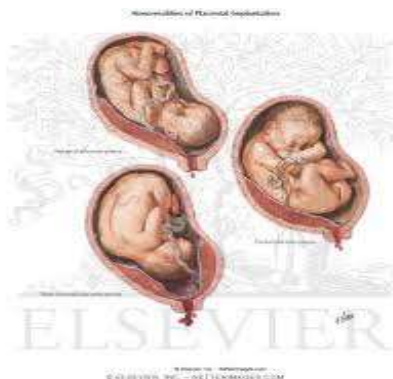
DEPARTMENT OF OBSTETRICS

<i>MONTH</i>	<i>OUT- PATIENTS NEW</i>	<i>OUT- PATIENTS OLD</i>	<i>IN- PATIENTS</i>
JANUARY	316	776	153
FEBRUARY	217	762	117
MARCH	272	1024	177
APRIL	197	1022	161
MAY	204	995	195
JUNE	188	953	171
JULY	231	1003	172
AUGUST	259	651	177
SEPTEMBER	425	993	190
OCTOBER	396	773	204
NOVEMBER	214	996	224
DECEMBER	439	768	223
TOTAL	3358	10716	2164

GRAND TOTAL

OUTPATIENTS: 14074

INPATIENTS: 2164



DEPARTMENT OF DENTISTRY

MONTH	OUT-PATIENTS NEW	OUT-PATIENTS OLD	IN-PATIENTS
JANUARY	519	250	1
FEBRUARY	652	278	1
MARCH	883	308	1
APRIL	622	300	2
MAY	803	209	1
JUNE	744	193	1
JULY	757	262	1
AUGUST	785	650	0
SEPTEMBER	853	268	0
OCTOBER	624	251	1
NOVEMBER	613	247	0
DECEMBER	236	711	1
TOTAL	7478	3927	10

GRAND TOTAL

OUTPATIENTS: 11405

INPATIENTS: 10



DEPARTMENT OF BIOCHEMISTRY

MONTH	BIO-CHEMISTRY	
	O.P	I.P
JANUARY	9768	17065
FEBRUARY	10028	16522
MARCH	11543	20582
APRIL	9365	15336
MAY	5756	9066
JUNE	8315	11535
JULY	10149	17174
AUGUST	8261	16200
SEPTEMBER	7090	13876
OCTOBER	4436	9939
NOVEMBER	7051	15068
DECEMBER	8605	19950
TOTAL	100367	182310

GRAND TOTAL:
BIOCHEMISTRY: 2,82,677

Biochemistry



DEPARTMENT OF MICROBIOLOGY

MONTH	BACTERIOLOGY		SEROLOGY		PARASITOLOGY	
	O.P	I.P	O.P	I.P	O.P	I.P
JANUARY	381	632	471	415	10	60
FEBRUARY	379	618	490	456	17	90
MARCH	417	646	613	419	17	120
APRIL	377	530	538	388	18	86
MAY	417	669	533	488	8	68
JUNE	447	649	550	362	10	64
JULY	469	696	660	572	21	76
AUGUST	416	588	662	477	25	89
SEPTEMBER	470	773	690	676	27	123
OCTOBER	388	507	461	500	6	79
NOVEMBER	531	727	724	632	9	88
DECEMBER	549	827	639	638	26	91
TOTAL	5241	7862	4331	6023	194	1034

GRAND TOTAL:

BACTERIOLOGY: 13103

SEROLOGY: 10354

PARASITOLOGY: 1228



DEPARTMENT OF PATHOLOGY

MONTH	HAEMATOLOGY		HISTO-PATHOLOGY		CYTOPATHOLOGY	
	O.P	I.P	O.P	I.P	O.P	I.P
JANUARY	11929	14924	25	138	128	9
FEBRUARY	11689	14011	29	188	140	28
MARCH	13223	18384	55	218	179	28
APRIL	13796	13691	53	146	135	14
MAY	13104	17024	58	124	15	162
JUNE	12500	14137	24	94	135	15
JULY	11668	13076	68	158	179	20
AUGUST	11768	16199	44	127	163	120
SEPTEMBER	10866	11679	35	133	12	143
OCTOBER	12700	10620	40	104	107	16
NOVEMBER	12434	13623	38	122	96	15
DECEMBER	16179	16906	40	134	76	36
TOTAL	151856	174294	509	1686	1365	606

GRAND TOTAL

HAEMATOLOGY: 326150

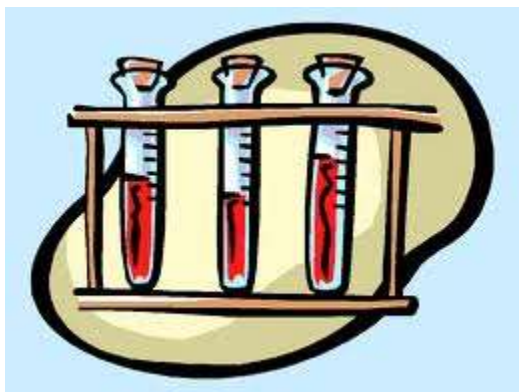
HISTOPATHOLOGY: 2195

CYTOPATHOLOGY: 1971



BLOOD BANK

MONTH	REQUEST RECEIVED	CROSS MATCHING	ISSUES	BAGS DISCARDED	NO.OF BLOOD GROUPING DONE
JANUARY	208	65	65	23	298
FEBRUARY	225	110	124	6	332
MARCH	252	90	109	7	366
APRIL	292	68	97	12	419
MAY	315	88	109	10	445
JUNE	308	79	89	9	407
JULY	426	132	172	7	547
AUGUST	339	78	130	10	462
SEPTEMBER	340	90	128	9	459
OCTOBER	339	72	108	20	532
NOVEMBER	372	96	123	40	495
DECEMBER	326	83	148	25	446
TOTAL	3742	1751	1402	178	5208



DEPARTMENT OF RADIOLOGY

MONTH	X-RAY		ULTRA-SOUND		SPECIAL INVESTIGATIONS	
	O.P	I.P	O.P	I.P	O.P	I.P
JANUARY	2430	763	571	269	2	2
FEBRUARY	2294	774	579	288	5	2
MARCH	2803	972	672	37	3	6
APRIL	2399	697	708	237	6	4
MAY	2467	806	699	249	0	0
JUNE	2123	650	672	227	0	0
JULY	2669	938	738	239	8	0
AUGUST	2451	770	702	240	4	1
SEPTEMBER	2833	907	645	228	5	1
OCTOBER	2227	715	517	226	4	0
NOVEMBER	2528	808	559	241	7	0
DECEMBER	2725	924	660	263	4	2
TOTAL	29949	9724	7722	2744	51	18

GRAND TOTAL:

X-RAY: 39673

ULTRASOUND: 10466

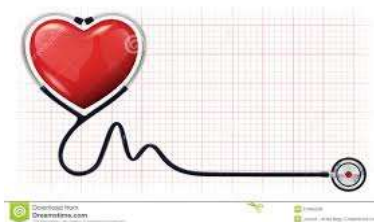
SPECIAL INVESTIGATIONS: 69



MEDICINE ECHO CARDIOGRAPHY

ECHO DETAILS - 2014	
<i>JUNE</i>	<i>16</i>
<i>JULY</i>	<i>59</i>
<i>AUGUST</i>	<i>79</i>
<i>SEPTEMBER</i>	<i>85</i>
<i>OCTOBER</i>	<i>96</i>
<i>NOVEMBER</i>	<i>105</i>
<i>DECEMBER</i>	<i>141</i>

TOTAL 581



DELIVERIES REPORT

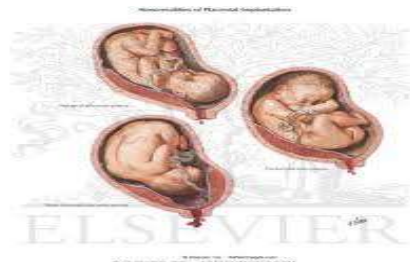
TOTAL NO. OF DELIVERIES			
PUDUCHERRY			
MONTH	MALE	FEMALE	TOTAL
JANUARY	47	25	72
FEBRUARY	33	28	61
MARCH	41	48	89
APRIL	31	41	72
MAY	38	35	73
JUNE	44	45	89
JULY	41	41	82
AUGUST	51	44	95
SEPTEMBER	43	41	84
OCTOBER	67	58	125
NOVEMBER	63	54	117
DECEMBER	51	51	102
GRAND TOTAL	550	511	1061
TAMIL NADU			
MONTH	MALE	FEMALE	TOTAL
JANUARY	22	23	45
FEBRUARY	14	13	27
MARCH	28	26	54
APRIL	35	24	59
MAY	35	34	69
JUNE	25	26	51
JULY	32	35	67
AUGUST	25	23	48
SEPTEMBER	31	21	52
OCTOBER	26	26	52
NOVEMBER	36	40	76
DECEMBER	28	23	51
GRAND TOTAL	337	314	651

GRAND TOTAL

NO. OF DELIVERIES PUDUCHERRY STATE: 1061

NO. OF DELIVERIES TAMIL NADU STATE: 651

NO. OF STILL BIRTH: 10



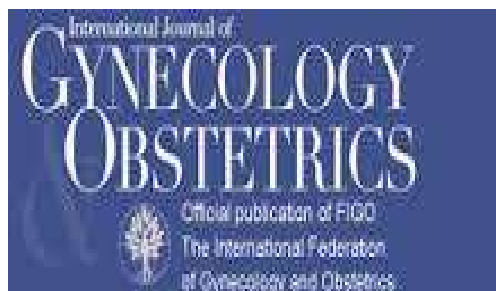
OG PROCEDURES - 2014

MONTH	TUBECTOMY	MTP
JANUARY	20	1
FEBRUARY	28	5
MARCH	37	13
APRIL	56	8
MAY	50	12
JUNE	31	5
JULY	43	7
AUGUST	29	1
SEPTEMBER	32	7
OCTOBER	36	3
NOVEMBER	47	7
DECEMBER	53	5
TOTAL	462	74

GRAND TOTAL

TUBECTOMY: 462

MTP: 74



THANK U!!!!!!